

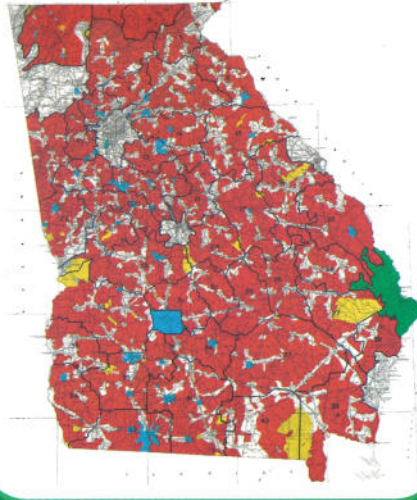
EMCs are:

- Private, locally operated electric utility businesses
- Owned and regulated by their customers
- Established to provide near-cost electric service
- Governed by a board of directors elected from the membership, a board that sets policies, procedures and rates to be implemented by the EMC's professional staff

In Georgia, the 42 electric membership cooperatives

- Serve more than 3.7 million of the state's 8.1 million residents.
- Cover 73 percent of Georgia's land area.
- Average ten customers per mile of distribution line, compared with 35 customers per mile for investor-owned electric utilities and 47 customers per mile for municipal electric utilities.
- Employ more than 4,700 workers.
- Operate the largest distribution network in the state by far, with more than 153,000 miles of electric power lines.

Red color indicates EMC's Service Area



Georgia Electric Membership Corporation

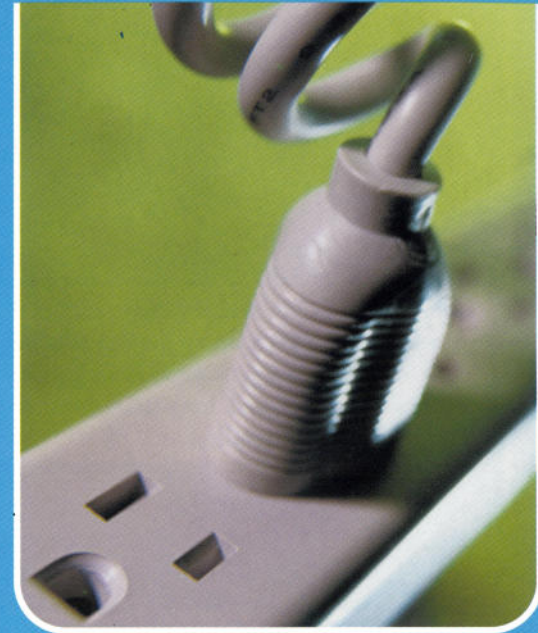
42 EMCs serving more than 3.7 million of the state's 8.1 million residents

2100 East Exchange Place • Tucker, GA 30084-5336
(770)-270-6950

info@georgiaemc.com • www.georgiaemc.com

Georgia's Electric Membership Corporations

The Facts - Just The Facts!



"It's a fact!"

Electric Membership Cooperatives (EMCs) are America's most successful public/private partnership.

The 41 locally owned EMCs in Georgia provide superior customer service to over 3.7 million people, and every year, we pay over \$70 million in taxes.

Since we operate without profit, we have been able to return an average of \$17 million in capital refunds to our customers *each* year for the past seven years.

Most Georgia EMCs provide power to their members at a rate 10 to 15 percent *below* the national average.

Georgia EMCs are securing new sources of electricity to meet our future needs, including construction of new generation facilities, new transmission lines and long-term contracts with other energy suppliers.

Since 1999, EMCs have added a 217-megawatt generating plant at the Smarr Energy Facility and four units totaling 492-

megawatts at Sewell Creek. Oglethorpe Power Corporation, on behalf of participating EMCs, is coordinating the building and operation of a 648-megawatt plant in Talbot County and 500-megawatts of new generating capacity at the Hal B. Wansley plant. Both projects are to be brought online by 2003.

Several EMCs are negotiating with new suppliers and others have already signed long-term contracts to buy electricity at a fixed price. All have the same goal: to ensure the safe, reliable delivery of electricity to our homes and businesses at an affordable price far into the future.

Our customers are our owners.

Through an elected board, our consumer-owners decide which products and services we offer and the prices we charge.

Many EMCs are being asked by their consumer-owners to supply more than electricity. These co-ops are responding individually, or in alliances with others, by offering a range of products and services, including telecommunications and home security.

None of these new services are funded with loans from the Federal government, and in fact, such activity is prohibited by law!

Electric cooperatives are working hard to pull Georgia's economic wagon.

EMCs provide a comprehensive statewide economic development effort that promotes the rural/suburban communities they serve.

In the past three years alone, Georgia's EMCs have helped recruit over 40 companies that have chosen a Georgia location. These companies have invested millions of dollars in facilities and created thousands of new jobs for Georgians.